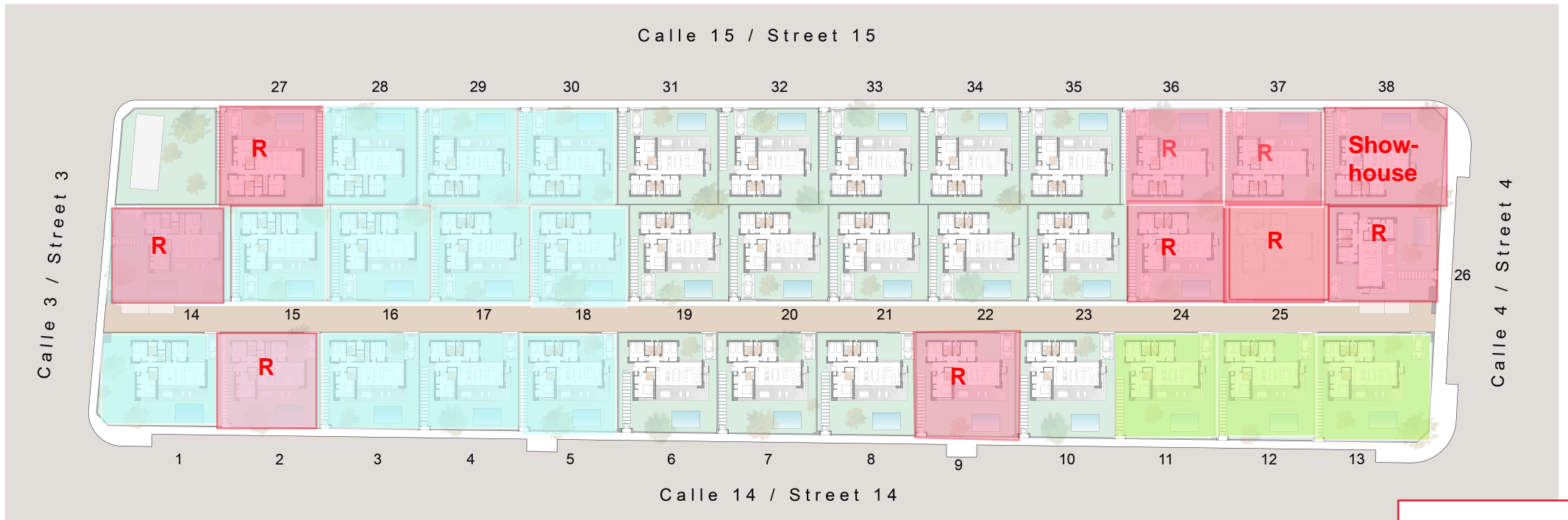


FORMENTERA

Vistabella Golf



EMPLACEMENTS

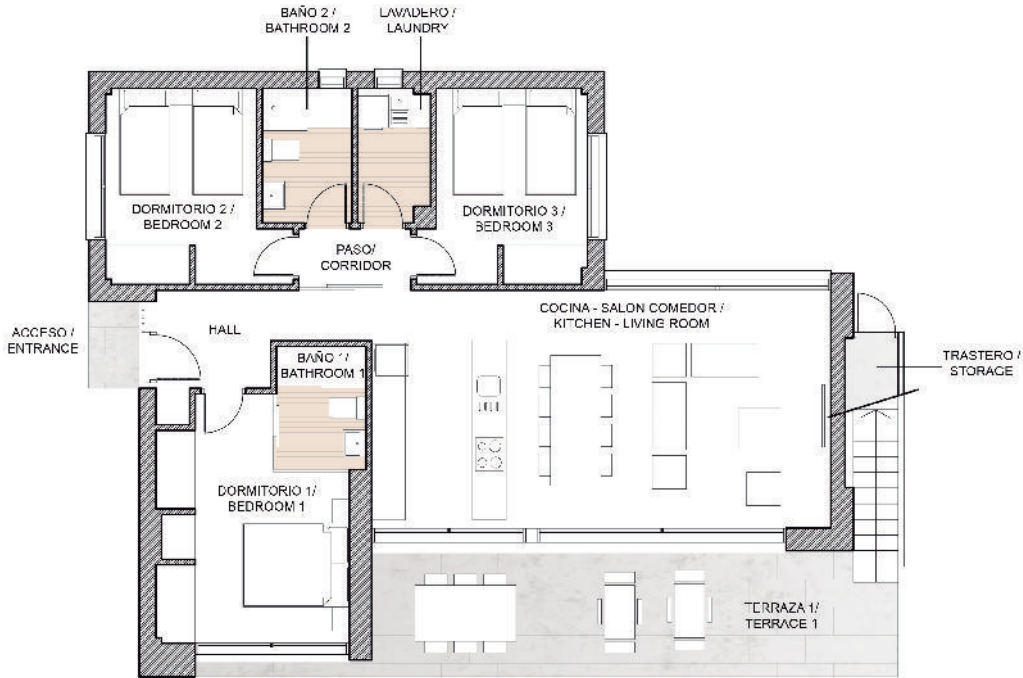
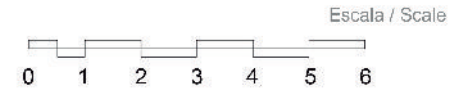


Parcelas emplacements

1	361,34 m ²	6	320,70 m ²	11	341,06 m ²	16	307,05 m ²	21	307,05 m ²	26	342,59 m ²	31	309,63 m ²	36	309,63 m ²
2	304,42 m ²	7	324,78 m ²	12	345,14 m ²	17	307,05 m ²	22	307,05 m ²	27	311,35 m ²	32	309,63 m ²	37	309,63 m ²
3	308,49 m ²	8	328,85 m ²	13	413,79 m ²	18	307,05 m ²	23	307,05 m ²	28	309,63 m ²	33	309,63 m ²	38	377,51 m ²
4	312,56 m ²	9	332,92 m ²	14	371,67 m ²	19	307,05 m ²	24	307,05 m ²	29	309,63 m ²	34	309,63 m ²		
5	316,63 m ²	10	337,00 m ²	15	307,05 m ²	20	307,05 m ²	25	307,05 m ²	30	309,63 m ²	35	309,63 m ²		

MODEL VILLA FORMENTERA

3 BEDROOMS



PLANTA BAJA /
GROUND FLOOR



SOLARIUM

Superficie construida / Built area

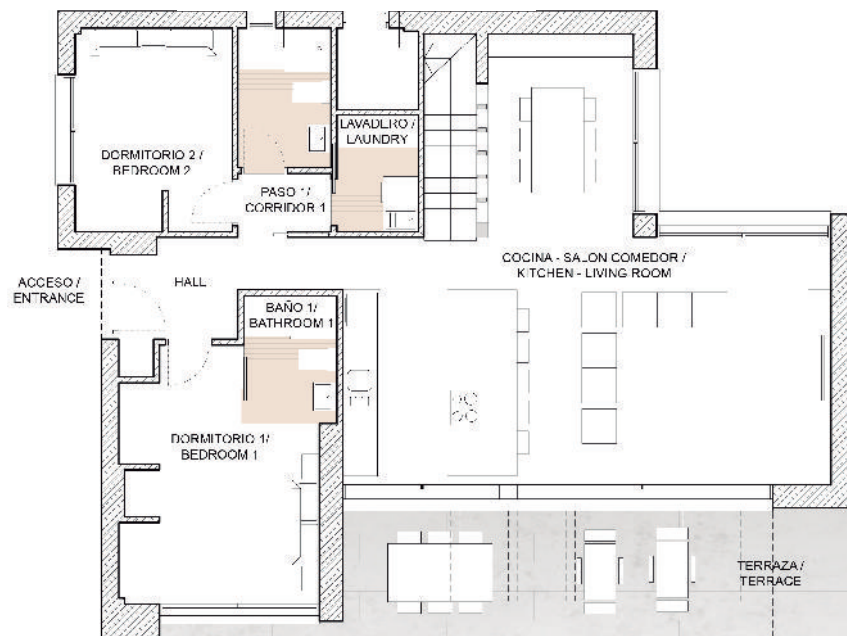
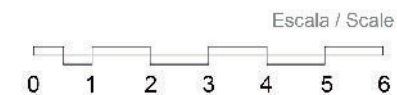
PROPIEDAD / PROPERTY	106,10 m ²
TERRAZAS / TERRACES	21,35 m ²
SOLARIUM	37,47 m ²
TOTAL CONSTRUIDA / BUILT AREA	164,92 m²

Planta Baja / Ground Floor Superficies útiles / Useful surface

ACCESO / ENTRANCE	1,39 m ²	LAVADERO / LAUNDRY	3,00 m ²
HALL	5,60 m ²	PASO / CORRIDOR	2,10 m ²
DORMITORIO 1 / BEDROOM 1	13,03 m ²	DORMITORIO 3 / BEDROOM 3	9,69 m ²
BAÑO 1 / BATHROOM 1	3,52 m ²	TRASTERO / STORAGE	1,75 m ²
COCINA-SALÓN COMEDOR / KITCHEN - LIVING ROOM	34,85 m ²	TERRAZA / TERRACE	21,35 m ²
DORMITORIO 2 / BEDROOM 2	10,01 m ²	SOLARIUM	37,47 m ²
BAÑO 2 / BATHROOM 2	3,84 m ²	ESCALERA / STAIR	4,02 m ²

MODEL VILLA FORMENTERA

2+1 BEDROOMS



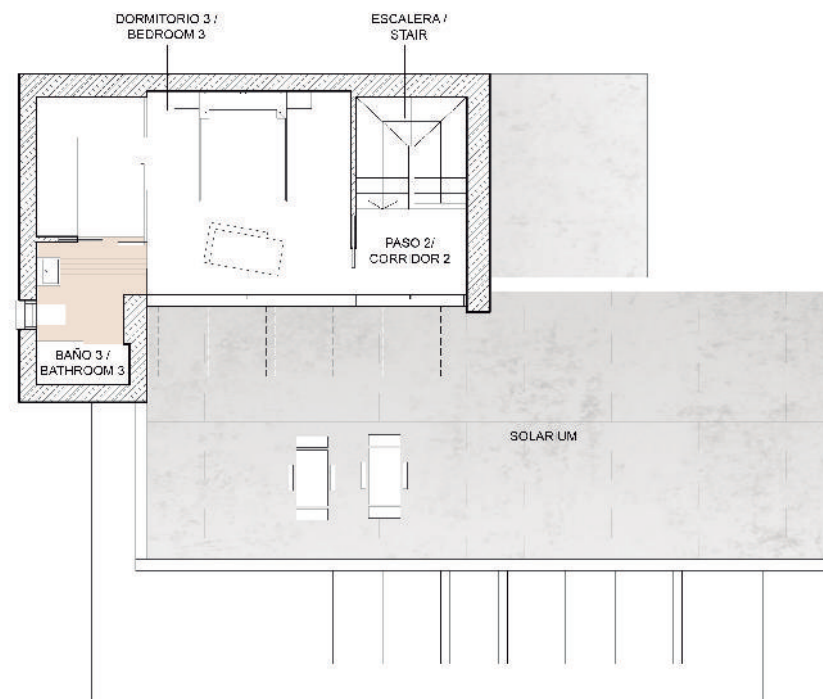
PLANTA BAJA /
GROUND FLOOR

Superficie construida / Built area

PROPIEDAD / PROPERTY	144,43 m ²
TERRAZAS / TERRACES	19,80 m ²
SOLARIUM	52,20 m ²
TOTAL CONSTRUIDA / BUILT AREA	216,43 m²

Planta Baja / Ground Floor Superficies útiles / Useful surface

ACCESO / ENTRANCE	1,39 m ²
HALL	5,40 m ²
DORMITORIO 1 / BEDROOM 1	13,03 m ²
BAÑO 1 / BATHROOM 1	3,52 m ²
COCINA-SALÓN COMEDOR / KITCHEN - LIVING ROOM	44,65 m ²
DORMITORIO 2 / BEDROOM 2	9,37 m ²
BAÑO 2 / BATHROOM 2	3,84 m ²
PASO 1 / CORRIDOR 1	1,80 m ²
LAVADERO / LAUNDRY	2,80 m ²
TRASTERO / STORAGE	1,95 m ²
TERRAZA / TERRACE	19,80 m ²



PLANTA ALTA /
TOP FLOOR

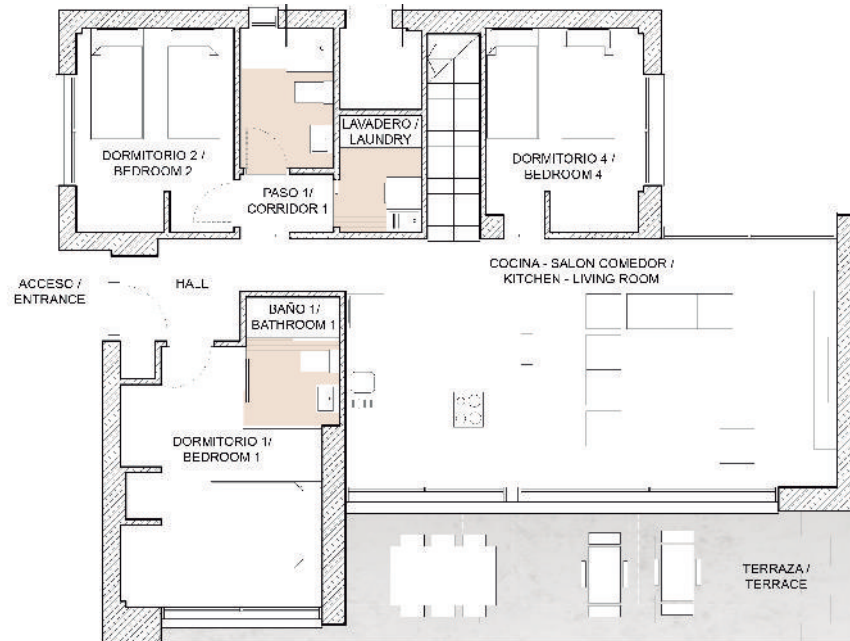
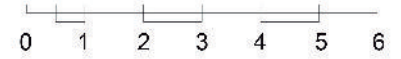
Planta Alta / Top Floor Superficies útiles / Useful surface

ESCALERA / STAIR	5,10 m ²
PASO 2 / CORRIDOR 2	2,79 m ²
DORMITORIO 3 / BEDROOM 3	16,80 m ²
BAÑO 3 / BATHROOM 3	4,10 m ²
SOLARIUM	52,20 m ²

MODEL VILLA FORMENTERA

3 + 1 BEDROOMS

Escala / Scale



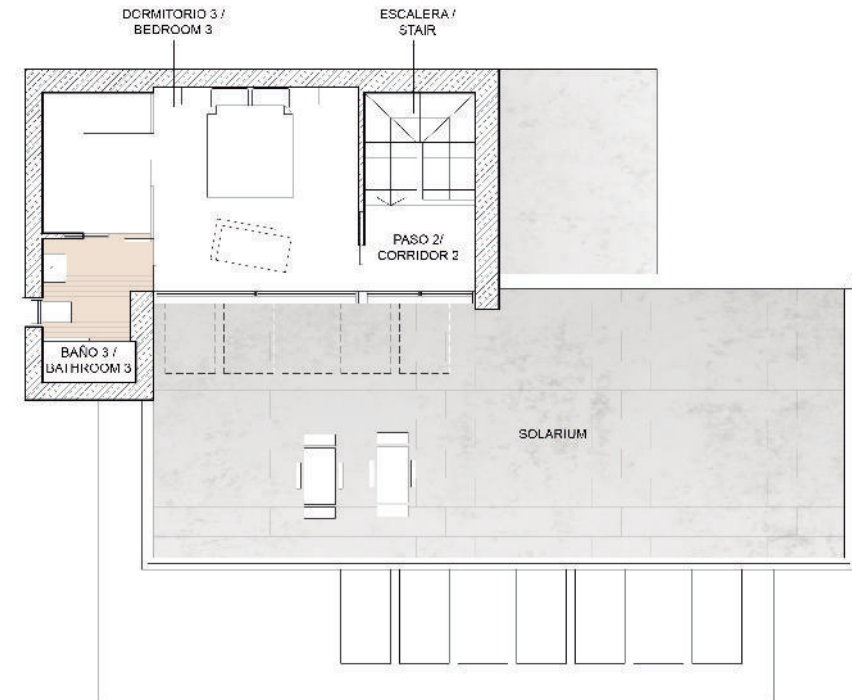
PLANTA BAJA /
GROUND FLOOR

Superficie construida / Built area

PROPIEDAD / PROPERTY	144,43 m ²
TERRAZAS / TERRACES	19,80 m ²
SOLARIUM	52,20 m ²
TOTAL CONSTRUIDA / BUILT AREA	216,43 m²

Planta Baja / Ground Floor Superficies útiles / Useful surface

ACCESO / ENTRANCE	1,39 m ²
HA.L.	5,40 m ²
DORMITORIO 1 / BEDROOM 1	13,03 m ²
BAÑO 1 / BATHROOM 1	3,52 m ²
COCINA-SALÓN COMEDOR / KITCHEN - LIVING ROOM	35,70 m ²
DORMITORIO 2 / BEDROOM 2	9,37 m ²
DORMITORIO 4 / BEDROOM 4	9,20 m ²
BAÑO 2 / BATHROOM 2	3,84 m ²
PASO 1 / CORRIDOR 1	1,60 m ²
LAVADERO / LAUNDRY	2,80 m ²
TRASTERO / STORAGE	1,95 m ²
TERRAZA / TERRACE	19,80 m ²



PLANTA ALTA /
TOP FLOOR

Planta Alta / Top Floor Superficies útiles / Useful surface

ESCALERA / STAIR	5,10 m ²
PASO 2 / CORRIDOR 2	2,79 m ²
DORMITORIO 3 / BEDROOM 3	16,80 m ²
BAÑO 3 / BATHROOM 3	4,10 m ²
SOLARIUM	52,20 m ²